

**BERGMANN**

*...die Spezialisten*

# Product Range

Innovative spreading, grassland and transfer technology





**Proven quality:  
"Made in Goldenstedt"**



BERGMANN, a successful, medium-sized, family-owned company in the third generation, has been firmly linked to its business location in Goldenstedt and its people for over 125 years.

Our actions are determined by an awareness of tradition and our innovative strength. Our state-of-the-art products for spreading and grassland technology, harvesting and transport logistics meet the highest quality standards and are in use worldwide every day.

As a strong and reliable partner in the agricultural sector, we develop and produce practical agricultural technology for our customers at our company's factory in Goldenstedt.

Our company philosophy, our ambition and our commitment are:

**Quality "Made in Goldenstedt"**

**BERGMANN Service**

**Customer satisfaction is our top priority**

Our service does not end when a machine is sold. As a partner we are available to our customers at all times.

Our service technicians provide personal advice on site and, if required, also by telephone trouble shooting.

Our customer service always ready to listen to your questions! We are available around the clock with our emergency service!





## Universal spreaders of the TSW series

BERGMANN has always pursued innovative ideas and significantly promoted important developments. With our universal spreaders, high-quality materials such as compost, organic sludge, lime and all types of cow and poultry manure are spread precisely, over large areas with minimum environmental impact. BERGMANN universal spreaders always work reliably, even under difficult conditions. In keeping with their high level of quality BERGMANN spreaders received the German Agricultural Society's (DLG) highest recognition for

quality and functionality with outstanding spreading precision.

Whenever particularly demanding spreading work is involved, BERGMANN universal spreaders are used. All spreaders can be equipped with different spreading units depending on the material to be spread and the method of distribution. A variety of optional equipment and extras allow optimal adaptation to customer requirements. ISOBUS operation is possible.

# Universal spreaders TSW



## Standard universal spreader unit

- with horizontal beaters and disk spreader unit
- ideal for spreading different material with working widths up to 24 m



## Wide-spreading unit V-Spread

- with horizontal beaters and disk spreader unit arranged in a V-pattern
- for working width up to 36 m
- less passages per area
- increased throughput compared to standard spreader units



### TSW 2120 E

- gross vehicle weight 8,000 – 12,000 kg
- load volume 9.1 m<sup>3</sup>
- 2-beater spreader unit (horizontal) with disk spreader unit (ø 900 mm)
- single axle



### TSW 2120 T

- gross vehicle weight 8,000 – 12,000 kg
- load volume 9.1 m<sup>3</sup>
- 2-beater spreader unit (horizontal) with disk spreader unit (ø 900 mm)
- mechanical Tandem chassis with parabolic springs



### TSW 2140 E

- gross vehicle weight 12,000 – 14,000 kg
- load volume 14 m<sup>3</sup>
- 2-beater spreader unit (horizontal) with disk spreader unit (ø 900 mm), V-Spread optional
- single axle



### TSW 3140 E

- gross vehicle weight 12,000 – 13,000 kg
- load volume 14.1 m<sup>3</sup>
- 2-beater spreader unit (horizontal) with disk spreader unit (ø 1,000 mm)
- single axle



### TSW 3140 T

- gross vehicle weight 14,000 – 15,000 kg
- load volume 14.1 m<sup>3</sup>
- 2-beater spreader unit (horizontal) with disk spreader unit (ø 1,000 mm)
- mechanical Tandem chassis with parabolic springs



### TSW 4190 S

- gross vehicle weight 18,000 – 19,000 kg
- load volume 15.8 m<sup>3</sup>
- 2-beater spreader unit (horizontal) with disk spreader unit (ø 1,000 mm)
- mechanical Tandem chassis with parabolic springs



### TSW 5210 S

- gross vehicle weight 20,000 – 22,000 kg
- load volume 17 m<sup>3</sup>
- 2-beater spreader unit (horizontal) with disk spreader unit (ø 1,000 mm), V-Spread optional
- mechanical Tandem chassis with parabolic springs



### TSW 5210 W

- gross vehicle weight 20,000 – 22,000 kg
- load volume 17 m<sup>3</sup>
- 2-beater spreader unit (horizontal) with disk spreader unit (ø 1,000 mm), V-Spread optional
- mechanical Tandem chassis with parabolic springs
- mechanical weighing system



### TSW 6240 S

- gross vehicle weight 23,000 – 24,000 kg
- load volume 19.7 m<sup>3</sup>
- 2-beater spreader unit (horizontal) with disk spreader unit (ø 1,000 mm), V-Spread optional
- Tandem chassis with hydraulic axle compensation



### TSW 6240 W

- gross vehicle weight 23,000 – 24,000 kg
- load volume 19.7 m<sup>3</sup>
- 2-beater spreader unit (horizontal) with disk spreader unit (ø 1,000 mm), V-Spread optional
- Tandem chassis with hydraulic axle compensation
- mechanical weighing system



### TSW 7340 S

- gross vehicle weight 33,000 – 34,000 kg
- load volume 23 m<sup>3</sup>
- 2-beater spreader unit (horizontal) with disk spreader unit (ø 1,000 mm), V-Spread optional
- Tridem chassis with hydraulic axle compensation



## Manure spreaders of the M series

BERGMANN manure spreaders have been successfully used worldwide for many decades to spread a wide variety of spreading materials. The high-quality frame structure and superior chassis technology provide for a balanced combination of handling and safety. BERGMANN manure spreaders always work reliably, even under difficult conditions.

In keeping with their high level of quality BERGMANN spreaders received the German Agricultural Society's (DLG) highest recognition for quality and functionality with outstanding spreading precision.

Whenever particularly demanding spreading work is involved, BERGMANN manure spreaders are the right choice. All spreaders can be equipped with different spreading units depending on the material to be spread and the method of distribution. A variety of optional equipment and extras allow optimal adaptation to customer requirements. ISOBUS operation is possible.

# Manure spreaders M



## 4-beater spreader unit

- with four vertical beaters
- bolted double tines for fine shredding of the material
- particularly well-suited for spreading of solid manure and high throughputs



## Hybrid spreader unit 2-Spread

- two vertical beaters (ø 1,050 mm) and connected spreader disks
- suitable for highest throughputs
- optimum shredding and spreading of the material due to bolted spreader blades and flat steel tines



### M 1080 SW

- gross vehicle weight 8,000 kg
- load volume 6.8 m<sup>3</sup>
- 4-beater spreader unit (vertical)
- single axle



### M 2120 SX E

- gross vehicle weight 8,000 – 12,000 kg
- load volume 9.1 m<sup>3</sup>
- 4-beater spreader unit (vertical)
- single axle



### M 2120 SXT

- gross vehicle weight 8,000 – 12,000 kg
- load volume 9.1 m<sup>3</sup>
- 4-beater spreader unit (vertical)
- mechanical Tandem chassis with parabolic springs



### M 2140 E

- gross vehicle weight 12,000 – 14,000 kg
- load volume 14 m<sup>3</sup>
- Hybrid spreader unit 2-Spread (vertical)
- single axle



### M 3140 SZ E

- gross vehicle weight 12,000 – 13,000 kg
- load volume 14.1 m<sup>3</sup>
- 4-beater spreader unit (vertical)
- single axle



### M 3140 SZ T

- gross vehicle weight 14,000 – 15,000 kg
- load volume 14.1 m<sup>3</sup>
- 4-beater spreader unit (vertical)
- mechanical Tandem chassis with parabolic springs



### M 4190 S

- gross vehicle weight 18,000 – 19,000 kg
- load volume 15.8 m<sup>3</sup>
- 4-beater spreader unit (vertical)
- mechanical Tandem chassis with parabolic springs



### M 5210 S

- gross vehicle weight 20,000 – 22,000 kg
- load volume 17 m<sup>3</sup>
- Hybrid spreader unit 2-Spread (vertical)
- mechanical Tandem chassis with parabolic springs



### M 5210 W

- gross vehicle weight 20,000 – 22,000 kg
- load volume 17 m<sup>3</sup>
- Hybrid spreader unit 2-Spread (vertical)
- mechanical Tandem chassis with parabolic springs
- mechanical weighing system



### M 6240 S

- gross vehicle weight 23,000 – 24,000 kg
- load volume 19.7 m<sup>3</sup>
- Hybrid spreader unit 2-Spread (vertical)
- Tandem chassis with hydraulic axle compensation



### M 6240 W

- gross vehicle weight 23,000 – 24,000 kg
- load volume 19.7 m<sup>3</sup>
- Hybrid spreader unit 2-Spread (vertical)
- Tandem chassis with hydraulic axle compensation
- mechanical weighing system



### M 7340 S

- gross vehicle weight 33,000 – 34,000 kg
- load volume 23 m<sup>3</sup>
- Hybrid spreader unit 2-Spread (vertical)
- Tridem chassis with hydraulic axle compensation

## Loader wagons

All four BERGMANN series loader wagons offer adapted system technology from specialists for professional farming operations and farm contractors. All machines come standard with exclusive equipment as well as well engineered loading and cutting management for the highest quality demands. BERGMANN is the only manufacturer to offer a pick-up either with or without camtrack for loader wagons. The user can therefore

decide which pick-up best suits his operating conditions. All models can be used both as loader wagons and as forage transport trailers. They are available with or without dosing rollers depending on individual requirements. ISOBUS operation is series and a weighing system is optionally available.



## ROYAL series



ROYAL 260 S



ROYAL 280 K



ROYAL 280 S



ROYAL 300 K

- load volume (DIN) 26.8 to 30 m<sup>3</sup>
- pick-up width 1,940 mm
- mechanical pick-up drive
- 2-rotor-system - cutting and pressing rotor

- 41 knives
- theoretical cutting length 34 mm
- mechanical Tandem chassis with parabolic springs

## REPEX series



REPEX 300 S



REPEX 320 K



REPEX 340 S



REPEX 360 K

- load volume (DIN) 29.2 to 35 m<sup>3</sup>
- pick-up width 1,940 mm
- hydraulic pick-up drive
- rotor diameter 750 mm

- 41 knives
- theoretical cutting length 35 mm
- mechanical Tandem chassis with parabolic springs

## SHUTTLE series



SHUTTLE 370 S



SHUTTLE 390 K



SHUTTLE 410 S



SHUTTLE 430 K



SHUTTLE 450 S



SHUTTLE 470 K



SHUTTLE 490 S



SHUTTLE 510 K

- load volume (DIN) 35.5 to 51 m<sup>3</sup>
- pick-up width 2,270 mm
- hydraulic pick-up drive
- rotor diameter 850 mm

- 53 knives
- theoretical cutting length 34 mm
- Tandem or Tridem chassis with hydraulic axle compensation

## CAREX series



CAREX 330 S



CAREX 350 K



CAREX 370 S



CAREX 390 K



CAREX 410 S



CAREX 430 K

- load volume (DIN) 31.3 to 43 m<sup>3</sup>
- pick-up width 2,050 mm
- hydraulic pick-up drive
- rotor diameter 850 mm
- 45 knives

- theoretical cutting length 35 mm
- mechanical Tandem chassis with parabolic springs (series for CAREX 330 S / 350 K)
- Tandem chassis with hydraulic axle compensation (optional for CAREX 330 S / 350 K)

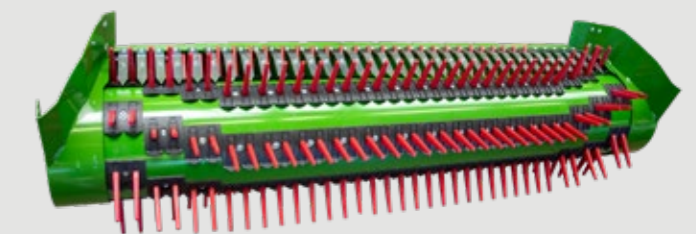
## ActiveLoad



- Proven actively controlled pick-up
- Reliable stripping of the spring tines
- Safe transfer of the crop into the rotor
- Clean forage and high soil protection thanks to adjustable pick-up speed
- Automatic or manual speed control via hydraulic pick-up drive



## EasyLoad



- Simply designed camless pick-up with short scrapers
- Smooth running and low maintenance
- Wear-resistant tines made of high-quality polyurethane
- Good ground following and clean forage due to wide, flexible tines
- Easy tine replacement due to patented tine attachment with only one bolt
- Automatic or manual speed control via hydraulic pick-up drive







## Forage transport trailers of the HTW series

The use of modern transport vehicles is one of the decisive factors for successful harvesting. One important link in this chain is the right forage transport trailer. The wide range of BERGMANN forage transport trailers have been developed for all farming companies where speed and cost-effectiveness are high priorities. Use in forestry operations, e.g. for transporting wood chips, can be ensured thanks to the robust, conical structure,

the steel scraper floor and four solid round steel chains with a total breaking load of 100 t. For comfortable and safe driving, the vehicle is equipped with either a boogie chassis or a chassis with hydraulic axle compensation. Depending on the requirements the HTW series can be equipped with many practical options, such as a cargo space cover, forced steering, LED working lights or an automatic central lubrication system.

## HTW series

### HTW 35 / HTW 35 S

- gross vehicle weight 20,000 – 22,000 kg
- load volume 34 to 36.6 m<sup>3</sup>
- S-model with dosing rollers
- Boogie chassis with parabolic springs and lowered pivoting point

### HTW 40 / HTW 40 S

- gross vehicle weight 20,000 – 24,000 kg
- load volume 39 to 42.1 m<sup>3</sup>
- S-model with dosing rollers
- Boogie chassis with parabolic springs and lowered pivoting point

### HTW 45 / HTW 45 S

- gross vehicle weight 23,000 – 24,000 kg
- load volume 45 to 48.6 m<sup>3</sup>
- S-model with dosing rollers
- Tandem chassis with hydraulic axle compensation

### HTW 50 / HTW 50 S

- gross vehicle weight 33,000 – 34,000 kg
- load volume 45 to 48.6 m<sup>3</sup>
- S-model with dosing rollers
- Tridem chassis with hydraulic axle compensation

### HTW 65 / HTW 65 S

- gross vehicle weight 33,000 – 34,000 kg
- load volume 52,1 to 56.4 m<sup>3</sup>
- S-model with dosing rollers
- Tridem chassis with hydraulic axle compensation





## Grain transfer trailers of the GTW series

The transfer trailer is the logical connection for transport between the continually moving combine harvesters and the transport vehicles waiting by the field. It unites the advantages of low ground disturbance, efficient transport in the field and fast road transport. It maximises combine harvester utilization by allowing its uninterrupted operation, thereby paying a valuable contribution to reducing the time needed for harvest. Furthermore, the transport vehicles can be fully loaded with a single filling, which saves waiting and downtimes at the field edge.

In addition to grains, the BERGMANN transfer trailers can also be used for any flowable goods – such as corn maize, CCM and rape – as well as seed and fertiliser for filling seeders and fertiliser spreaders. With their low centre of gravity, they offer superior driving comfort on both field and road. Their low dead weight results in a high payload.

## GTW series

### GTW 210

- gross vehicle weight 12,000 – 13,000 kg (road), 21,000 kg (field)
- load volume 21 m<sup>3</sup>
- feed auger ø 350 mm, overload auger ø 400 mm
- transfer rate 400 t/h
- single axle

### GTW 300

- gross vehicle weight 22,000 kg (road), 30,000 kg (field)
- load volume 25 / 30 m<sup>3</sup> (series / option)
- feed auger ø 350 mm, overload auger ø 400 mm
- transfer rate 400 t/h
- mechanical Tandem chassis with parabolic springs

### GTW 330

- gross vehicle weight 24,000 kg (road), 35,000 kg (field)
- load volume 30 / 33 m<sup>3</sup> (series / option)
- feed auger ø 500 mm, overload auger ø 600 mm
- transfer rate 1,100 t/h
- Powerband drive
- Tandem chassis with hydraulic axle compensation

### GTW 430

- gross vehicle weight 34,000 kg (road), 46,000 kg (field)
- load volume 38.5 / 43 m<sup>3</sup> (series / option)
- feed auger ø 500 mm, overload auger ø 600 mm
- transfer rate 1,100 t/h
- Powerband drive
- Tridem chassis with hydraulic axle compensation





## Beet transfer trailers of the RRW series

The beet transfer trailer is the logistical transport link between the constantly moving beet harvesters and the windrows or the transport vehicles at the edge of the field. The use of a beet transfer trailer can considerably increase a beet harvester's performance.

BERGMANN beet transfer trailers are extremely stable due to their full-steel structure and are therefore ideally suited for use under difficult conditions. Thanks to the two meters wide transfer conveyor, they have a transfer capacity of up to 2,100 tons per hour. The transfer belt

with integrated cleaning function, folds into three sections, making it exceptionally adaptable to all conditions up to a transfer height of more than four meters. Both models have a hydraulic chassis for optimum driving comfort on the field and on the road. Maximum soil protection can be achieved with the optional crab steering system, i.e. offset track driving. A tyre pressure control system is also optionally available. ISOBUS operation is possible.

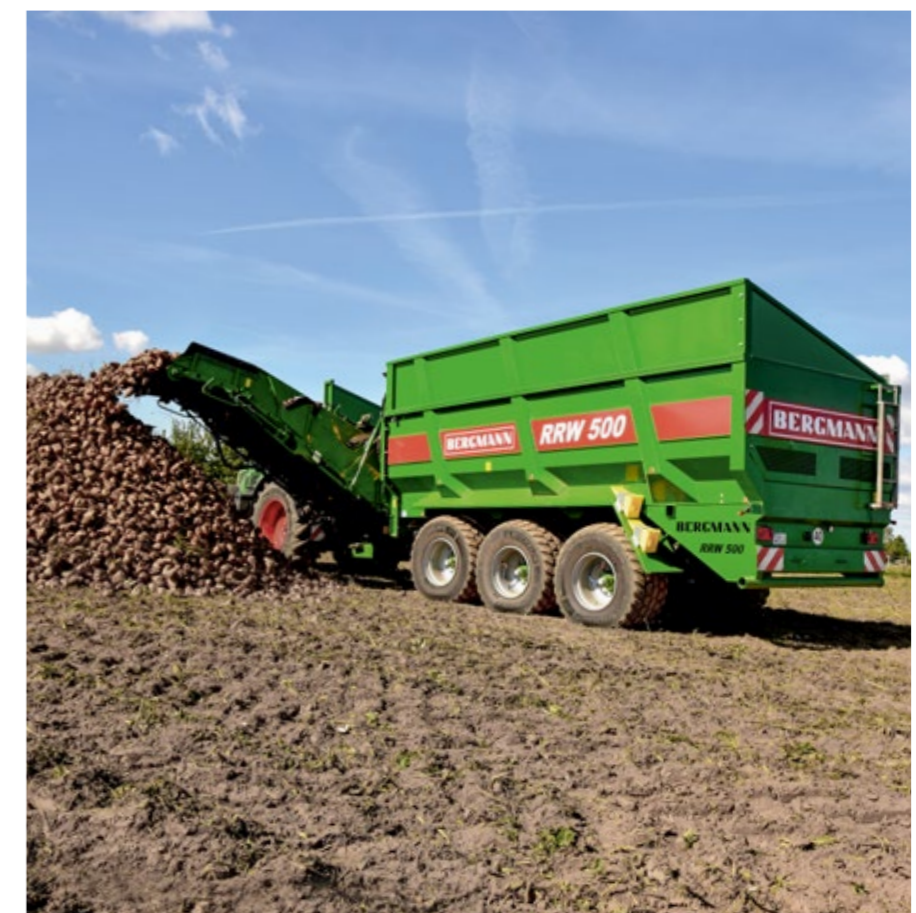
## RRW series

### RRW 400

- gross vehicle weight 24,000 kg (road), 36,000 kg (field)
- load volume 39 m<sup>3</sup>
- width of transfer belt 2 m
- transfer rate 2,100 t/h
- Tandem chassis with hydraulic axle compensation
- swap body

### RRW 500

- gross vehicle weight 34,000 kg (road), 52,000 kg (field)
- load volume 50,7 m<sup>3</sup>
- width of transfer belt 2 m
- transfer rate 2,100 t/h
- Tridem chassis with hydraulic axle compensation
- swap body





## Body swap system of the VARIO series

The VARIO series Tandem and Tridem chassis can be combined with different swap bodies. This enables the chassis to be used to its full capacity throughout the year. Possible bodies include spreaders, forage, beet transfer and tank bodies as well as tank dumpers. They are available with two Tandem chassis (22,000 and 24,000 kg gross vehicle weight) in different lengths, or a Tridem chassis (34,000 kg gross vehicle weight). All undercarriages are equipped with a hydraulic chassis and drawbar suspension for optimum driving

characteristics, even on rough terrain. A lift axle for more driving comfort on the road, a tyre pressure control system for maximum soil protection and a weighing system for exact work documentation are available on request. The swap bodies are fastened with Jost Twist-Lock fasteners, which have been proven in the container truck industry. This ensures safe driving even on rough terrain.

### Spreader bodies

- load volume 17 m<sup>3</sup>, 19.7 m<sup>3</sup> or 23 m<sup>3</sup>
- spreader units:
  - 2-beater spreader unit (horizontal) with disk spreader unit (ø 1,000 mm), V-Spread optional
  - Hybrid spreader unit 2-Spread (vertical)

### Forage bodies

- load volume 34 m<sup>3</sup>, 39 m<sup>3</sup> or 45 m<sup>3</sup>
- S-models with dosing rollers

### Customized solutions

- Customized solutions for truck chassis and semi-trailers
- Individual body systems with third-party products are also possible on request.

## VARIO 400



VARIO 400



M/TSW A 16



HT 35 (S)

- gross vehicle weight 20,000 – 22,000 kg
- Tandem chassis with hydraulic axle compensation
- track width 2,100 mm

## VARIO 440



VARIO 440



M/TSW A 19



HT 40 (S)

- gross vehicle weight 23,000 – 24,000 kg
- Tandem chassis with hydraulic axle compensation
- track width 2,100 mm

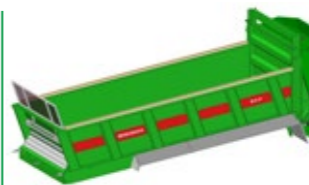


RRW A 400

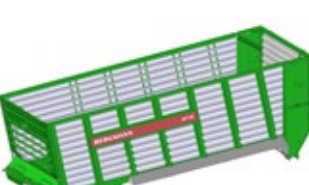
## VARIOSIX



VARIOSIX



M/TSW A 21



HT 50 (S)

- gross vehicle weight 33,000 – 34,000 kg
- Tridem chassis with hydraulic axle compensation
- track width 2,100 mm

## Our product range contains the right vehicle for every operation and every application.

- ▶ Manure Spreaders
- ▶ Universal Spreaders
- ▶ Loader Wagons
- ▶ Forage Transport Trailers
- ▶ Body Swap System
- ▶ Grain Transfer Trailers
- ▶ Beet Transfer Trailers
- ▶ Self-propelled Systems

# BERGMANN

*...die Spezialisten*

**Ludwig Bergmann  
International Sales GmbH**

Hauptstraße 64 - 66  
49424 Goldenstedt/Germany  
Tel. +49 (0) 44 44 - 20 08-0  
Fax +49 (0) 44 44 - 20 08 88  
info@l-bergmann.de

[www.bergmann-goldenstedt.de](http://www.bergmann-goldenstedt.de)



Member of **BERGMANN**  
GROUP